

Medical & Laboratory cold storage system

Low Temperature Freezer

Temperature: -25/-40°C Capacity: 50~485L

Handle
Handle for easy operation,



Microcomputer Control
Digital temperature display, ensure precise and stable running.



Door lock
Safety Lock to prevent unauthorized access which protects the storage in safe environment.



Heavy duty castors
Castors with break, easy moving and stop.



High efficient freezing system and good thermal insulation properties

Maintenance-free design condenser, do not need to clean the dust regularly.

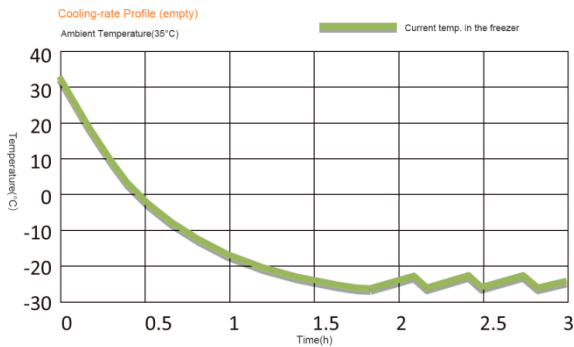
All color sprayed steel body, easy to clean.

Adjustable steel wire shelves, color sprayed steel inner door.

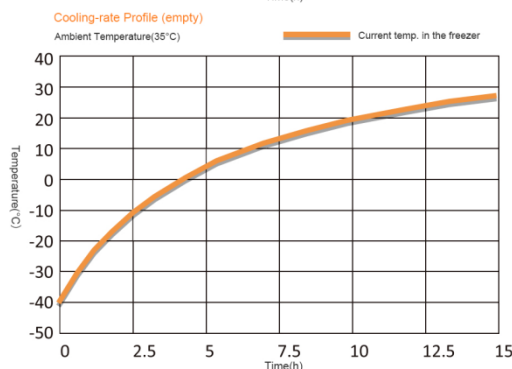
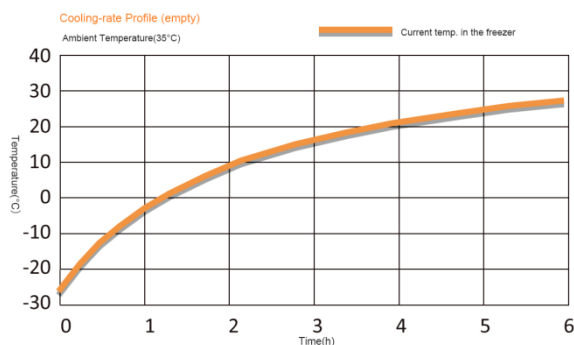
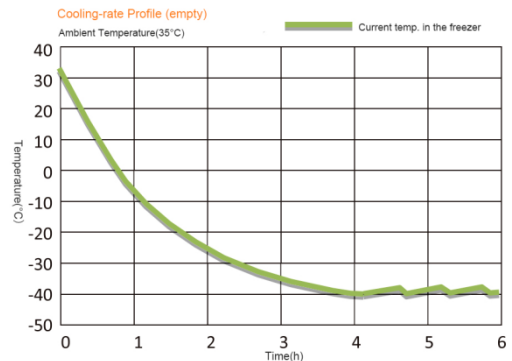


TOPLAB Low temperature freezer offers a large capacity storage space with fast temperature performance. Integrated design of cold shelf and evaporator provides additional refrigeration efficiency. This product is designed to store vaccines, blood plasma, and many other biological materials. Installations can be found in research institutions and clinical sites in life science, electronic testing and medical markets.

Temperature profile for -25°C



Temperature profile for -40°C



TL-40V50 ULF



Model	TL-40V50 ULF	Capacity(L)	50 L
External Size(mm)	540 X 620 X 1115	N.W./G.W.(kg)	75/95
Inner Size(mm)	361 X 429 X 406	Loading Quantity(20")	48
Package Size(mm)	690 X 760 X 1170	Insulation	PURF
Voltage	220/110V; 50/60Hz	External Material	Color sprayed steel
Power(W)	250	Inner Material	304 Stainless steel
Setting Temp.(°C)	-10~-40	Shelves	1
Ambient Temp. (°C)	10-32	Noise(db)	≤51
Alarm System	High/low temperature, sensor failure		
Optional Accessories	Remote alarm system, cold storage racks & boxes		

TL-40V268 ULF



Model	TL-40V268 ULF	Capacity(L)	268 L
External Size(mm)	673 X 676 X 1630	N.W./G.W.(kg)	113/125
Inner Size(mm)	508 X 519 X 1137	Loading Quantity(20")	24
Package Size(mm)	735 X 755 X 1665	Insulation	PURF
Voltage	220/110V; 50/60Hz	External Material	Color sprayed steel
Power(W)	593	Inner Material	Color sprayed steel
Setting Temp.(°C)	-30~-40	Shelves	3
Ambient Temp. (°C)	10-32	Noise(db)	≤53.5
Alarm System	High/low temperature, sensor failure, door ajar, power failure(8h)		
Optional Accessories	Remote alarm system, cold storage basket		

TL-40V328 ULF



Model	TL-40V328 ULF	Capacity(L)	328 L
External Size(mm)	673 X 676 X 1886	N.W./G.W.(kg)	128/140
Inner Size(mm)	508 X 519 X 1393	Loading Quantity(20")	24
Package Size(mm)	735 X 755 X 1920	Insulation	PURF
Voltage	220/110V; 50/60Hz	External Material	Color sprayed steel
Power(W)	613	Inner Material	Color sprayed steel
Setting Temp.(°C)	-30~-40	Shelves	4
Ambient Temp. (°C)	10-32	Noise(db)	≤54.5
Alarm System	High/low temperature, sensor failure, door ajar, power failure(8h)		
Optional Accessories	Remote alarm system, cold storage basket		

TL-40H105 ULF



Model	TL-40H105 ULF	Capacity(L)	105 L
External Size(mm)	680 X 580 X 935	N.W./G.W.(kg)	38/35
Inner Size(mm)	480 X 380 X 665	Loading Quantity(20")	48
Package Size(mm)	740 X 680 X 1010	Insulation	PURF
Voltage	220/110V; 50/60Hz	External Material	Color sprayed steel
Power(W)	120	Inner Material	304 Stainless steel
Setting Temp.(°C)	-10~-40	Compressor/QTY	Brand/1
Ambient Temp. (°C)	10-32	Noise(db)	≤49
Alarm System	High/low temperature, sensor failure, power failure(48h)		
Optional Accessories	Remote alarm system		

TL-40H485 ULF



Model	TL-40H485 ULF	Capacity(L)	485 L
External Size(mm)	1695 X 805 X 955	N.W./G.W.(kg)	150/170
Inner Size(mm)	1455 X 525 X 665	Loading Quantity(20")	12
Package Size(mm)	1710 X 875 X 1090	Insulation	PURF
Voltage	220/110V; 50/60Hz	External Material	Color sprayed steel
Power(W)	295	Inner Material	304 Stainless steel
Setting Temp.(°C)	-10~-40	Compressor/QTY	Brand/1
Ambient Temp. (°C)	10-32	Noise(db)	≤52
Alarm System	High/low temperature, sensor failure, power failure(48h)		
Optional Accessories	Remote alarm system		

TL-25V268 ULF



Model	TL-25V268 ULF	Capacity(L)	268 L
External Size(mm)	673 X 676 X1630	N.W./G.W.(kg)	113/125
Inner Size(mm)	508 X 519 X 1137	Loading Quantity(20")	24
Package Size(mm)	735 X 755 X 1665	Insulation	PURF
Voltage	220/110V; 50/60Hz	External Material	Color sprayed steel
Power(W)	593	Inner Material	Color sprayed steel
Setting Temp.(°C)	-10~-25	Shelves	3
Ambient Temp. (°C)	10-32	Noise(db)	≤51
Alarm System	High/low temperature, sensor failure, door ajar, power failure(8h)		
Optional Accessories	Remote alarm system, cold storage basket		

TL-25V328 ULF



Model	TL-25V328 ULF	Capacity(L)	328 L
External Size(mm)	673 X 676 X 1886	N.W./G.W.(kg)	128/140
Inner Size(mm)	508 X 519 X 1393	Loading Quantity(20")	24
Package Size(mm)	735 X 755 X 1920	Insulation	PURF
Voltage	220/110V; 50/60Hz	External Material	Color sprayed steel
Power(W)	613	Inner Material	Color sprayed steel
Setting Temp.(°C)	-10~-25	Shelves	4
Ambient Temp. (°C)	10-32	Noise(db)	≤52
Alarm System	High/low temperature, sensor failure, door ajar, power failure(8h)		
Optional Accessories	Remote alarm system, cold storage basket		

TL-25H100 ULF



Model	TL-25H100 ULF	Capacity(L)	100 L
External Size(mm)	570 X 580 X 880	N.W./G.W.(kg)	30/35
Inner Size(mm)	450 X 375 X 705	Loading Quantity(20")	54
Package Size(mm)	665 X 615 X 920	Insulation	PURF
Voltage	220/110V; 50/60Hz	External Material	Color sprayed steel
Power(W)	87	Inner Material	Embossed Al board
Setting Temp.(°C)	-10~-25	Compressor/QTY	Brand/1
Ambient Temp. (°C)	10-32	Noise(db)	≤46
Alarm System	High/low temperature, sensor failure, power failure(48h)		
Optional Accessories	Remote alarm system		

TL-25H200 ULF



Model	TL-25H200 ULF	Capacity(L)	485 L
External Size(mm)	865 X 660 X 875	N.W./G.W.(kg)	35/38
Inner Size(mm)	735 X 440 X 685	Loading Quantity(20")	36
Package Size(mm)	955 X 700 X 935	Insulation	PURF
Voltage	220/110V; 50/60Hz	External Material	Color sprayed steel
Power(W)	100	Inner Material	Embossed Al board
Setting Temp.(°C)	-10~-25	Compressor/QTY	Brand/1
Ambient Temp. (°C)	10-32	Noise(db)	≤46
Alarm System	High/low temperature, sensor failure, power failure(48h)		
Optional Accessories	Remote alarm system		

TL-25H300 ULF



Model	TL-25H300 ULF	Capacity(L)	50 L
External Size(mm)	1120 X 745 X 875	N.W./G.W.(kg)	49/51
Inner Size(mm)	970 X 490 X 660	Loading Quantity(20")	22
Package Size(mm)	1205 X 790 X 935	Insulation	PURF
Voltage	220/110V; 50/60Hz	External Material	Color sprayed steel
Power(W)	120	Inner Material	Embossed Al board
Setting Temp.(°C)	-10~-25	Compressor/QTY	Brand/1
Ambient Temp. (°C)	10-32	Noise(db)	≤46
Alarm System	High/low temperature, sensor failure, power failure(48h)		
Optional Accessories	Remote alarm system		